

# **RIDING THE TRAIN THURSDAY JUNE 3<sup>RD</sup> AND OR SATURDAY JUNE 5<sup>TH</sup> 2010?**

**The City of Harvard will be hosting its annual Milk Days celebration on June 3<sup>rd</sup>, 4<sup>th</sup>, 5<sup>th</sup> & 6<sup>th</sup>. On Thursday afternoon, June 3<sup>rd</sup>, starting at 5pm, Ayer St. will be closed off for approximately 1 hour. On Saturday June 5<sup>th</sup>, Ayer St. will be completely blocked off for the Parade route. If you are commuting just for the day, you will need to familiarize yourself with how to get around Ayer St. and into the correct parking lot. If you will be commuting for more than one day, again you need to familiarize yourself with how to get to the overnight parking lots.**

**The Harvard Police Department (across the street from the Metra Depot at the corner of Front & Eastman St's) will be open to assist anybody needing to be re-routed around Ayer St. but please understand nobody will be able to physically guide you to the correct lot. Maps will be provided at the Metra Depot and the Harvard Police Department with directions on how to get around Ayer St.**

**Any questions, please call the Harvard Police Department at 815-943-4431**

# Directions to the Metra Parking Lots for Milk Days

## Please make sure you are using the correct lot for Daily and Overnight Parking

### See Map on reverse side

Coming from the North for Daily Parking: Head Southbound on Route 14. Turn right onto W. McKinley St. Turn left on 2<sup>nd</sup> St. Take that until the first stop sign. Turn right onto W. Diggins St. then a left onto Page St. Take that to W. Front St. then turn left then right into the Metra Parking lot.

Coming from the South for Daily Parking: Head Northbound on Route 14. Turn left onto W. McKinley St. Turn left on 2<sup>nd</sup> St. Take that until the first stop sign. Turn right onto W. Diggins St. then a left onto Page St. Take that to W. Front St. then turn left then right into the Metra Parking lot.

Coming from the East for Daily Parking: Heading West bound on Route 173, stay straight at the stop lights. Route 173 will turn into W. Diggins St. Turn left onto Page St. Take that to W. Front St. then turn left then right into Metra Parking lot.

Coming from the West for Daily Parking: Heading East bound on Route 173, turn left onto Route 14 and head North. Turn left onto W. McKinley St. Turn left on 2<sup>nd</sup> St. Take that until the first stop sign. Turn right onto W. Diggins St. then a left onto Page St. Take that to W. Front St. then turn left then right into the Metra Parking lot.

Coming from the North for Overnight Parking: Head Southbound on Route 14. Turn left onto Dewey St (right before the bridge). Turn right onto Hart St. Hart St. will “T” into Railroad St. Turn right on Railroad and that will bring you right into the Overnight Parking lot.

Coming from the South for Overnight Parking: Head Northbound on Route 14, go over the bridge and turn right onto Dewey St. (right after the bridge). Turn right onto Hart St. Hart St. will “T” into Railroad St. Turn right on Railroad and that will bring you right into the Overnight Parking lot.

Coming from the East for Overnight Parking: Heading West bound on Route 173, turn left at Hart St. Continue on Hart St. until it “T’s” at Railroad St. Turn right onto Railroad and that will bring you right into the Overnight Parking lot.

Coming from the West for Overnight Parking: Heading East bound on Route 173, turn left onto Route 14 and head North, go over the bridge. Turn right on Dewey St. (right after the bridge). Turn right onto Hart St. Hart St. will “T” into Railroad St. Turn right on Railroad and that will bring you right into the Overnight Parking lot.

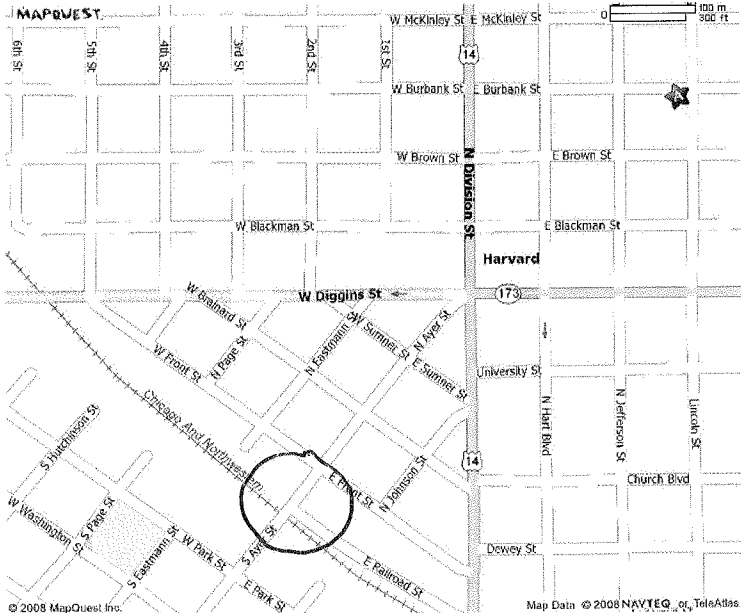
MAPQUEST.



© 2008 MapQuest Inc.

Map Data © 2008 NAVTEQ or TeleAtlas

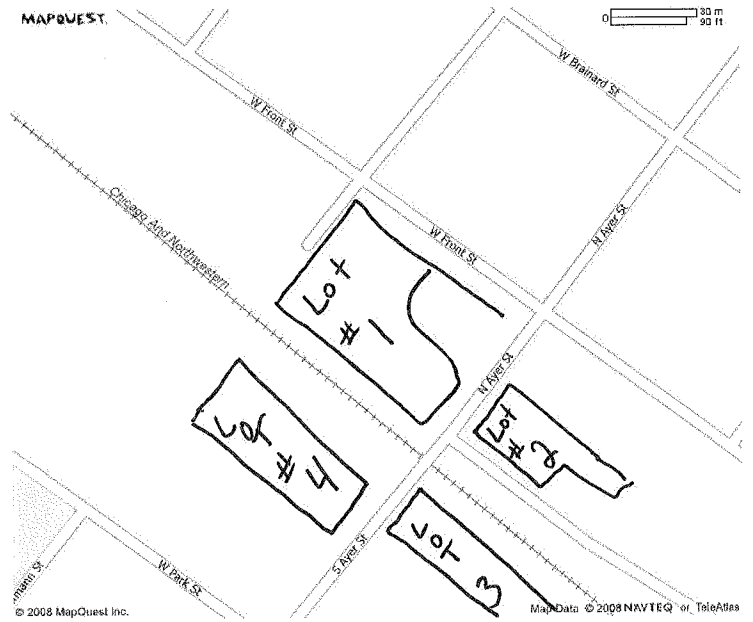
MAPQUEST.



© 2008 MapQuest Inc.

Map Data © 2008 NAVTEQ or TeleAtlas

MAPQUEST.



© 2008 MapQuest Inc.

Map Data © 2008 NAVTEQ or TeleAtlas