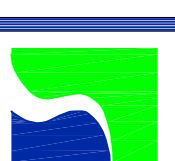
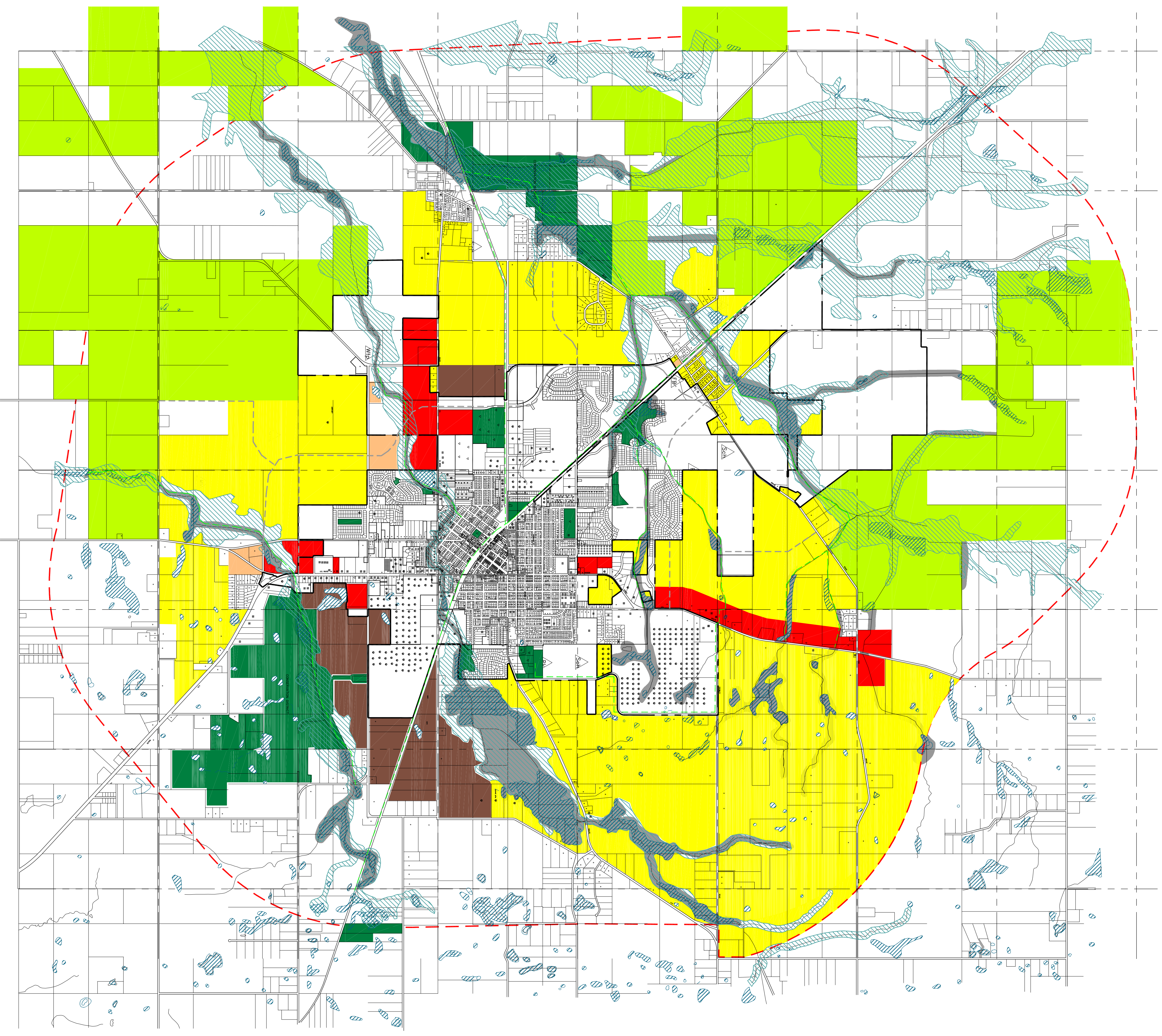


CITY OF HARVARD COMPREHENSIVE PLAN MAP



SMITH ENGINEERING CONSULTANTS, INC.
ENGINEERS SURVEYORS PLANNERS
4600 PRIME PARKWAY, SUITE 200
MILFORD, MASSACHUSETTS 01860
TEL: 978-110-1100 FAX: 978-286-1781

COMP. FILE: HARV-CMP.DWG
PLOT FILE: HARV-CMP.PDF
VER. MAP-SM



LEGEND

BOUNDARIES

- PLANNING JURISDICTION BOUNDARY
- - - VILLAGE LIMITS BOUNDARY
- - - DRAINAGE BASIN BOUNDARY
- - - AGRICULTURAL PROTECTION DISTRICT

EXISTING LAND USES

- RESIDENTIAL - SINGLE FAMILY
- ⊗ RESIDENTIAL - DUPLEX
- ⊗ RESIDENTIAL - MULTI-FAMILY
- ⊗ COMMERCIAL - RETAIL, OFFICE
- ⊗ INSTITUTIONAL
- ▽ INDUSTRIAL STORAGE
- ▽ PARKS

TRANSPORTATION CLASSIFICATIONS

- ARTERIAL
- COLLECTOR
- GREENWAY & TRAIL

ENVIRONMENTAL CONSTRAINTS

- ▨ FLOOD PLAN LIMITS
- ▨ WETLANDS
- ▨ WETLAND PROTECTION AREA

FUTURE LAND USES

- CONSERVATION
- AGRICULTURAL/ RURAL
- RESIDENTIAL - LOW DENSITY
- RESIDENTIAL - MEDIUM DENSITY
- COMMERCIAL - RETAIL
- COMMERCIAL - OFFICE
- INDUSTRIAL/ STORAGE
- AGRICULTURAL CONSERVATION

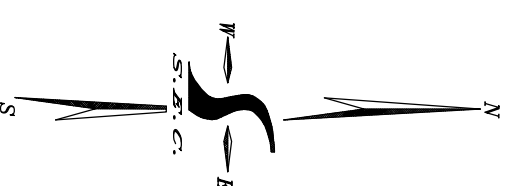
FUTURE FEATURES

- △ PK PARKS
- △ WHP WASTE TREATMENT
- △ FR FIRE & RESCUE
- △ Sch SCHOOLS

CITY OF HARVARD

BASE MAP
LAND USES
NATURAL RESOURCES
AGRICULTURAL
DRAINAGE
TRANSPORTATION
PARK & RECREATION
COMMUNITY FACILITIES
FUTURE LAND USE

FOR FUTURE TRANSPORTATION CORRIDORS, SEE
CITY OF HARVARD CITYWIDE TRANSPORTATION
PLAN, DATED JULY, 2005.



REVISIONS		DATE:		PROJECT NO.	
NO.	BY	DATE	SCALE	NO.	NO.
1	LJ	09-13-05	4-16-97	HARV	050009.01
2	HRV	10-03-05	1" = 4000'		
3	HRV	03-14-06			
4					
5					

CHK. BY:	INT:	VERT. SCALE:	SHEET NO.
GR		1 OF 1	

CITY OF HARVARD COMPREHENSIVE PLAN MAP